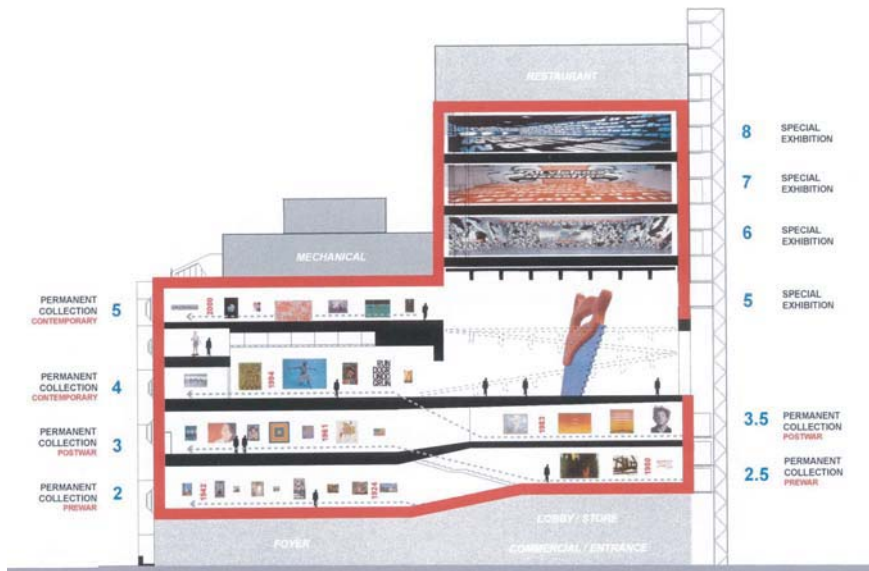


Whitney Museum of American Art

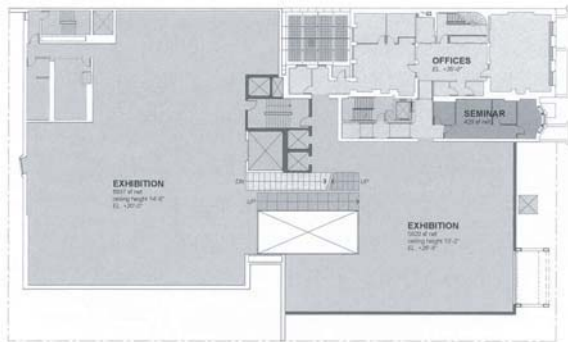


This scheme for the Whitney Museum's expansion doubles the amount of exhibit and service space for the museum. The expansion is conceived as a composition of three independent volumes, including the original Marcel Breuer building. The two additional volumes are held apart from each other with a flexible indoor / outdoor space between them. This space contains a moveable floor which can be raised or lowered to expand the height of the space, or set at an angle to create raked seating for a performance based installation. The largest scale artworks would be exhibited here. The two new volumes are connected by a series of lifts, expressed on the exterior of the building. These lifts carry visitors and artworks for installation, but are also intended to hold temporary high-tech plug-in elements that will supplement the exhibits in the open gallery floors.

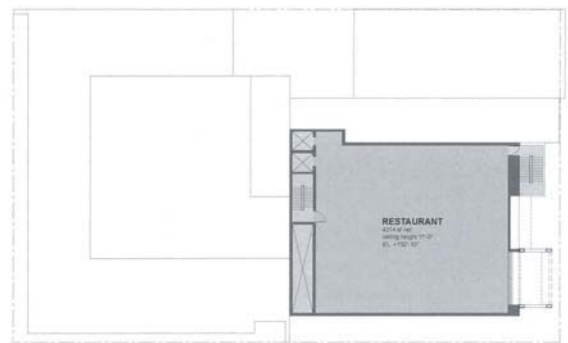
The new volumes are intended to be chameleonic, shifting skins depending on the events, as shown in the various renderings. This ambiguity allows for the new buildings to reference the Breuer building in scale, but at the same time maintain an impermanence that places them firmly in the background.



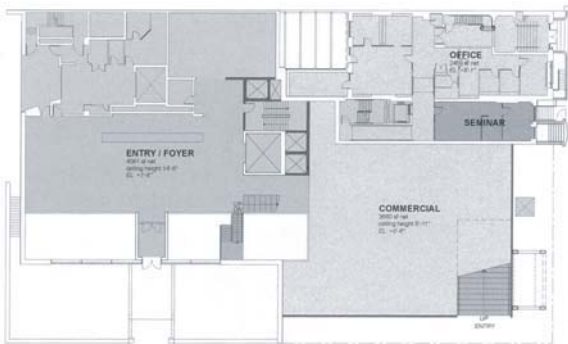
The section view shows the interstitial space at its maximum height, with double the volume of the existing special exhibition space to its left. Permanent collection spaces are expanded to occupy the existing building and the lower floors of the addition.



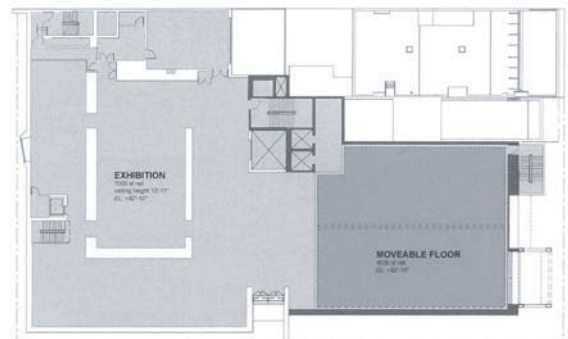
2nd floor plan



9th floor plan



ground floor plan



5th floor plan



conceptual collage of the interstitial space between the new volumes: the raked seating element is shown, with the plug-in element at the exterior lifts as the focal point