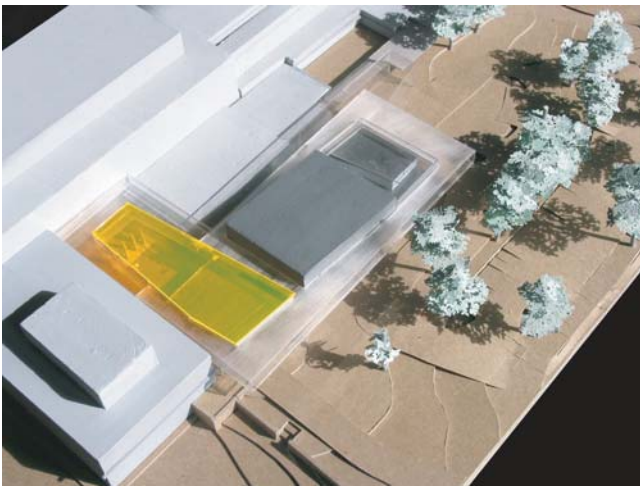


West Virginia University Health Sciences Center Library



The existing West Virginia University Health Sciences center was a sprawling monolith with a windowless, claustrophobic library. The new learning center is situated as a new entry and orientation point to the complex. The program called for three new lecture halls, and a significant expansion of the existing library, with new study space, computer labs, circulation and information desk. A new commons was built as a focal gathering space for the school.

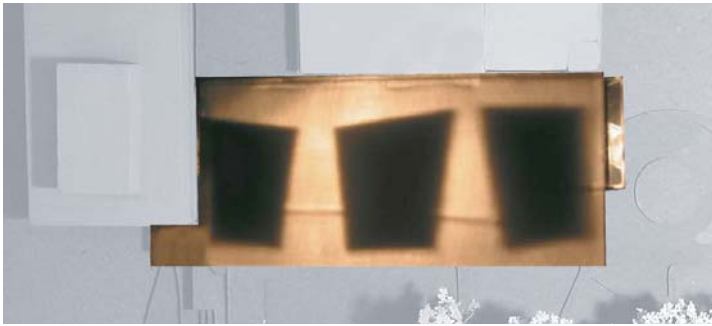




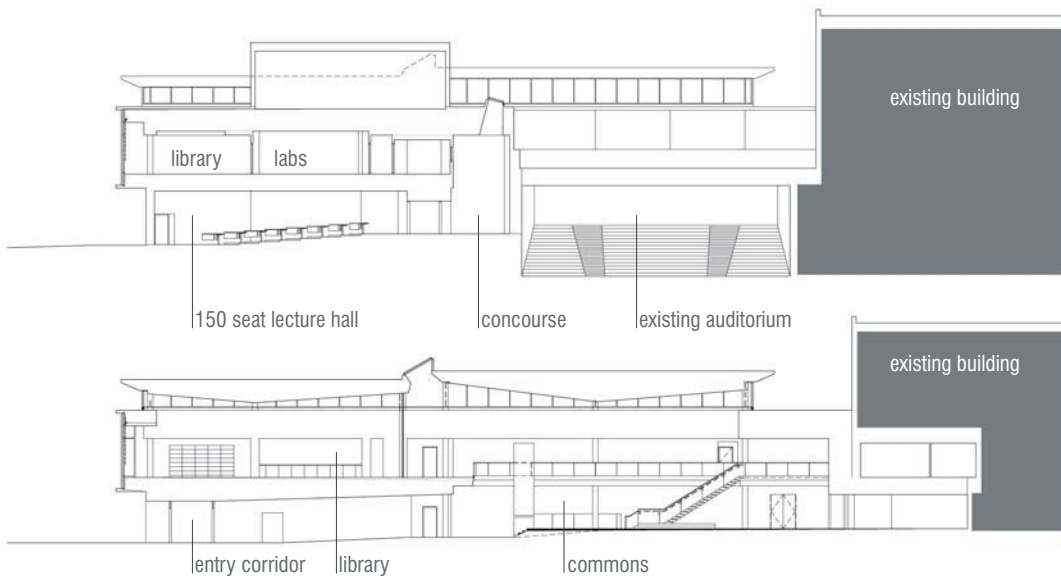
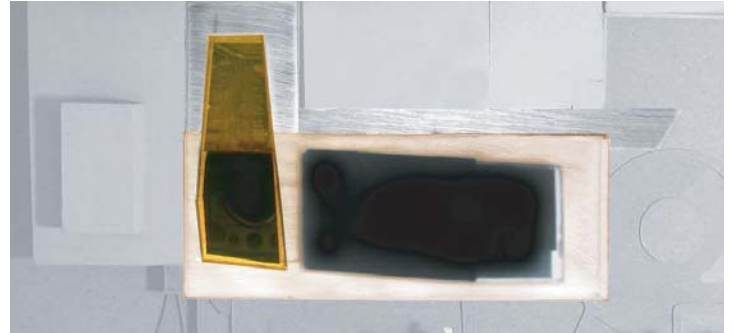
Exterior View



Commons



Concept models - top view



The three lecture halls were conceived as a base for the library expansion, which is expressed as an elevated glazed box looking outward to the landscape. One moves between the lecture halls, their form expressed as objects in the landscape, to access the commons areas and the main building.

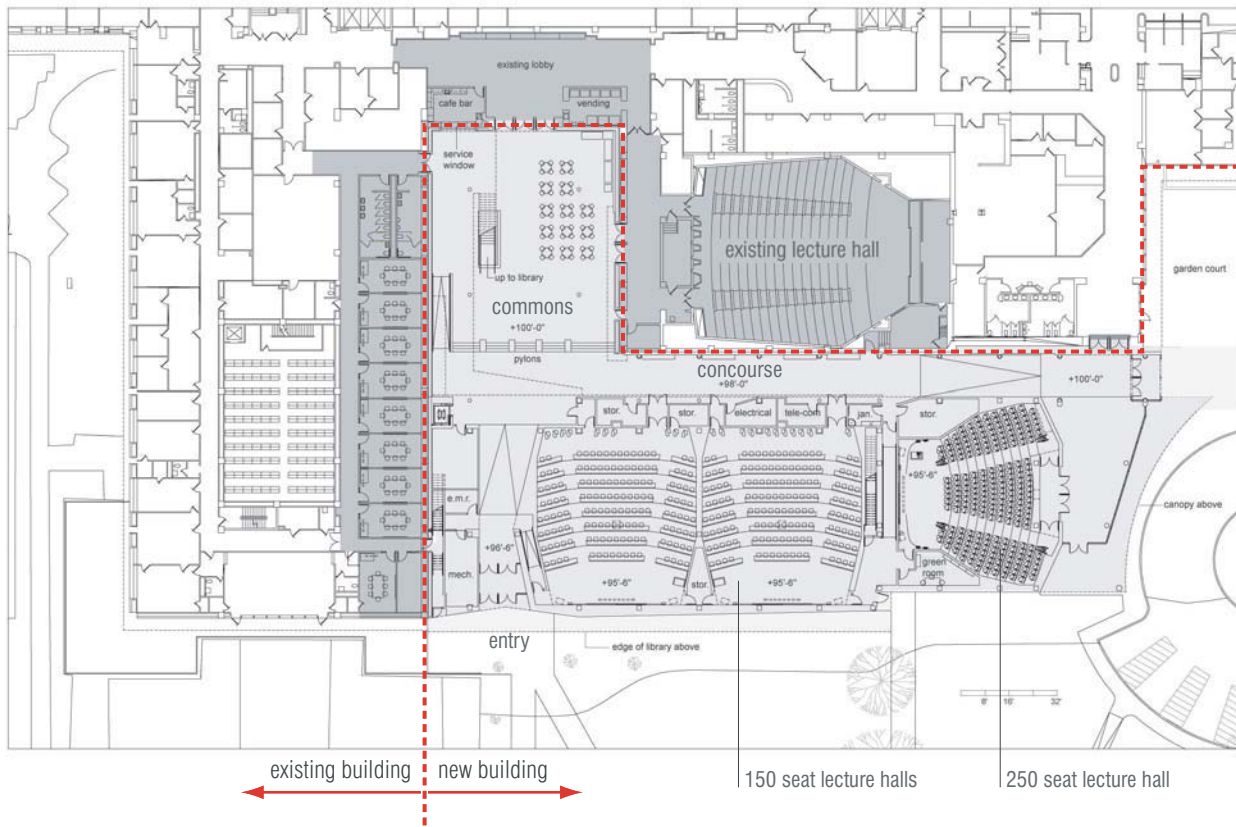
The existing library is maintained as stack space, while the expansion, with its light and views, houses the new circulation and reference desk, open study carrels and computers, as well as enclosed study rooms.



250 Seat Lecture Hall



150 Seat Lecture Hall



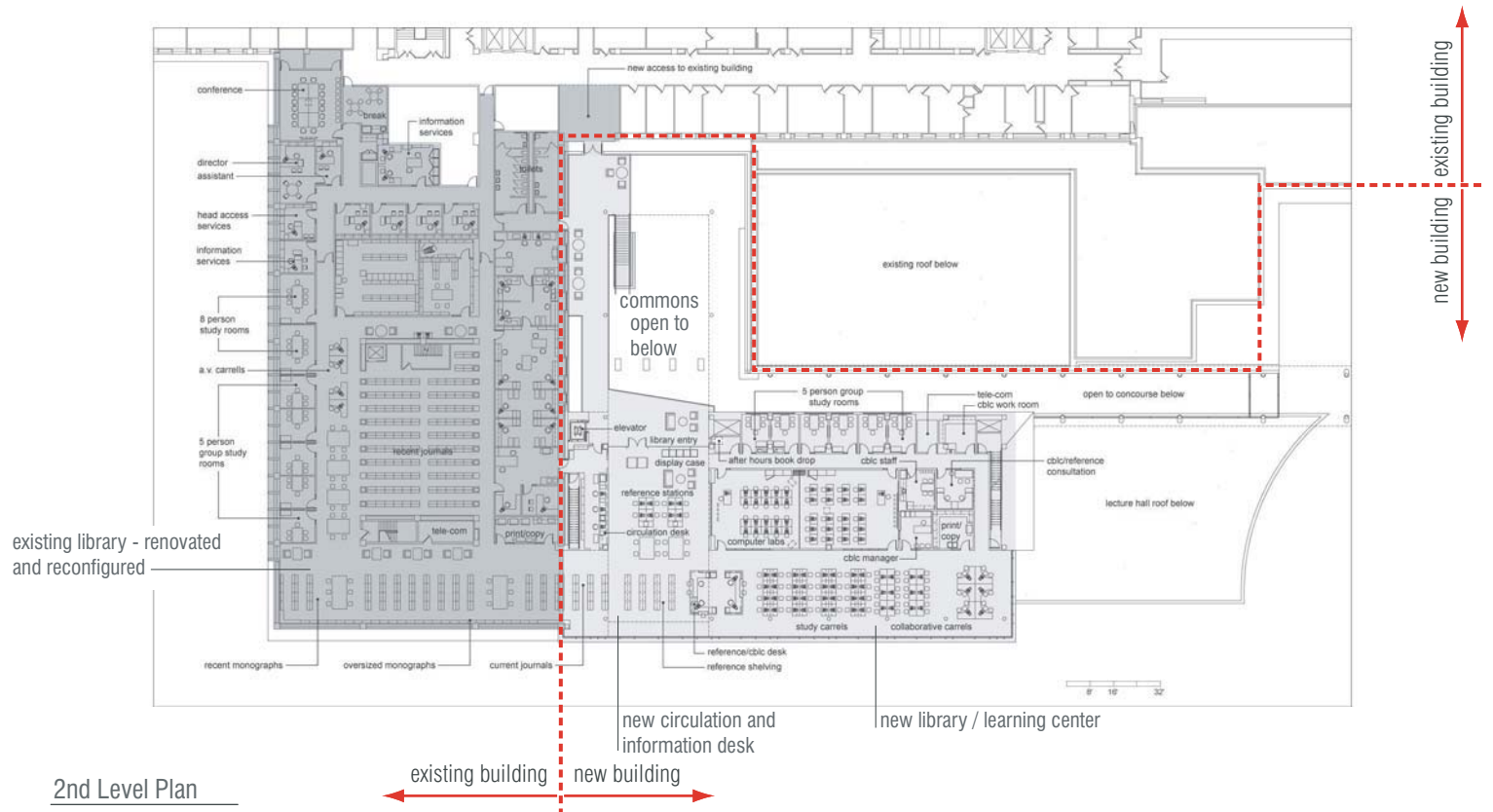
Ground Level Plan



Library - Circulation Desk



Library - Reference Desk



2nd Level Plan