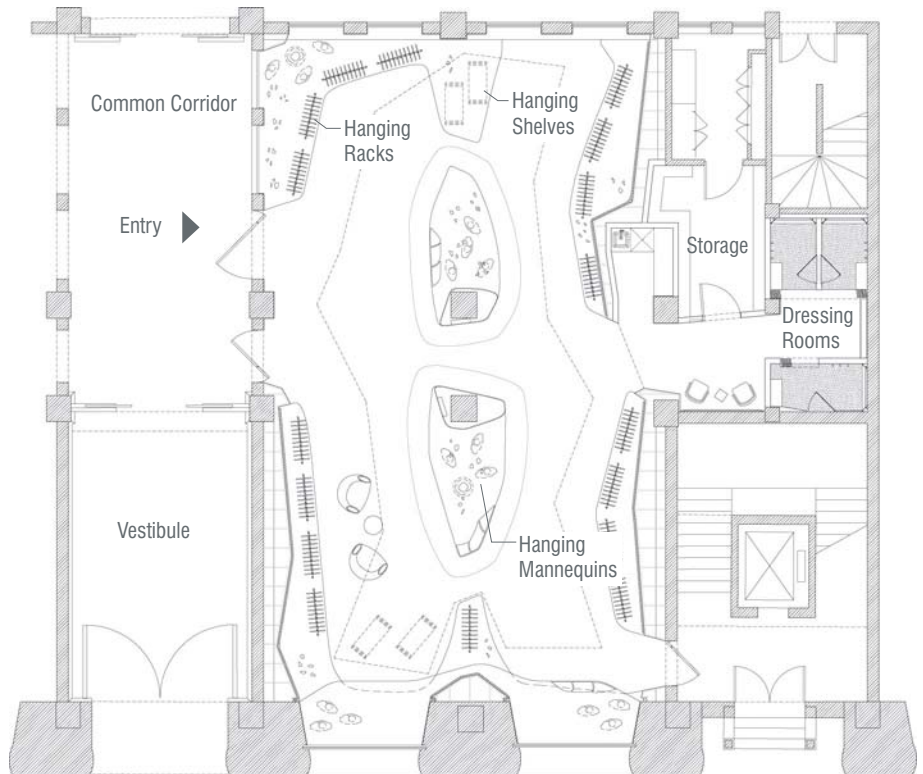


# Ports 1961 Shanghai



The design for Ports 1961's new Shanghai flagship store transformed a space in an art deco building in the fashionable Bund district into a fluid display armature and backdrop for the Ports collection. The design picked up on the local themes of the port and its art deco surroundings. The port theme was translated into the weathered CNC milled wood walls, which were inspired by the lofting patterns of the hulls of ships. Art deco themes are carried into the details of the nickel silver display 'petals' and the fluid central display armature, made from epoxy coated CNC milled medium density fiberboard.



Plan