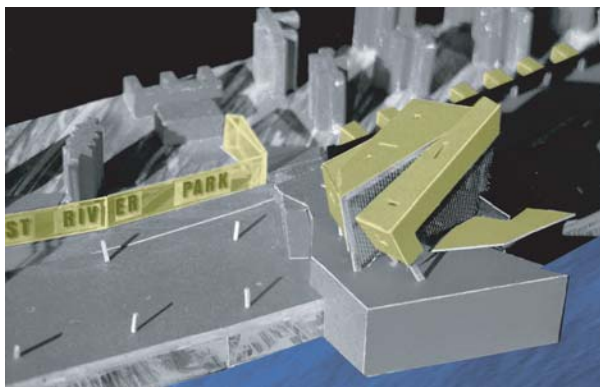
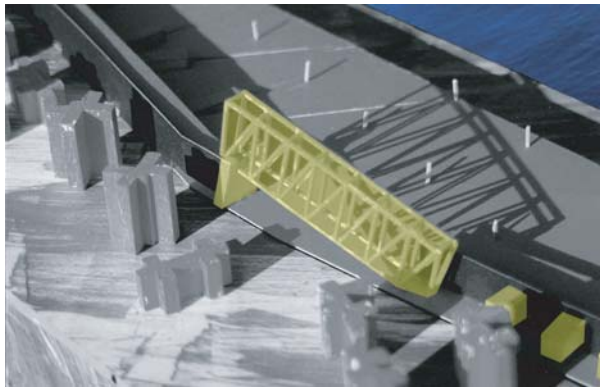
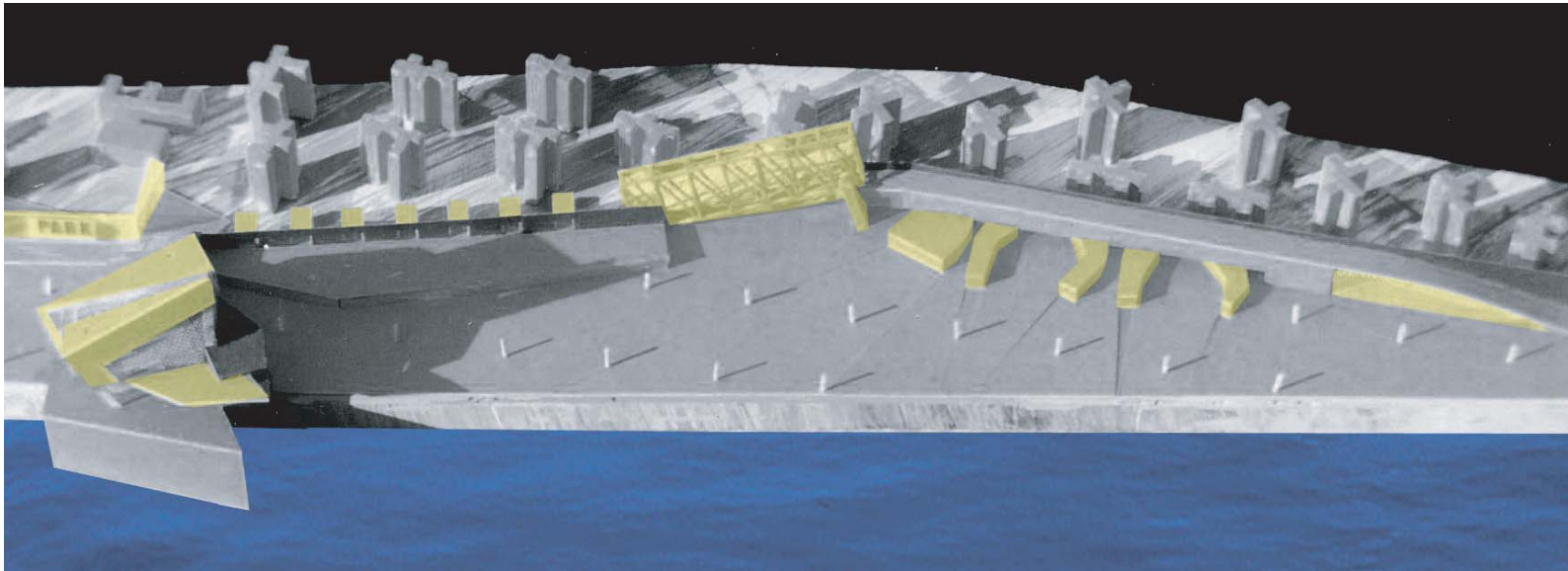
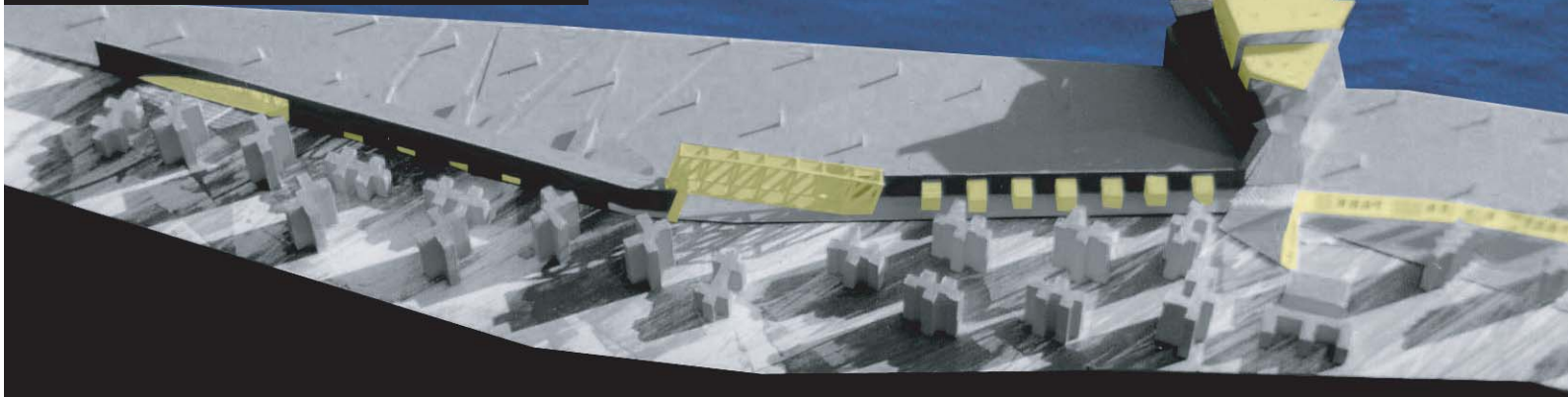


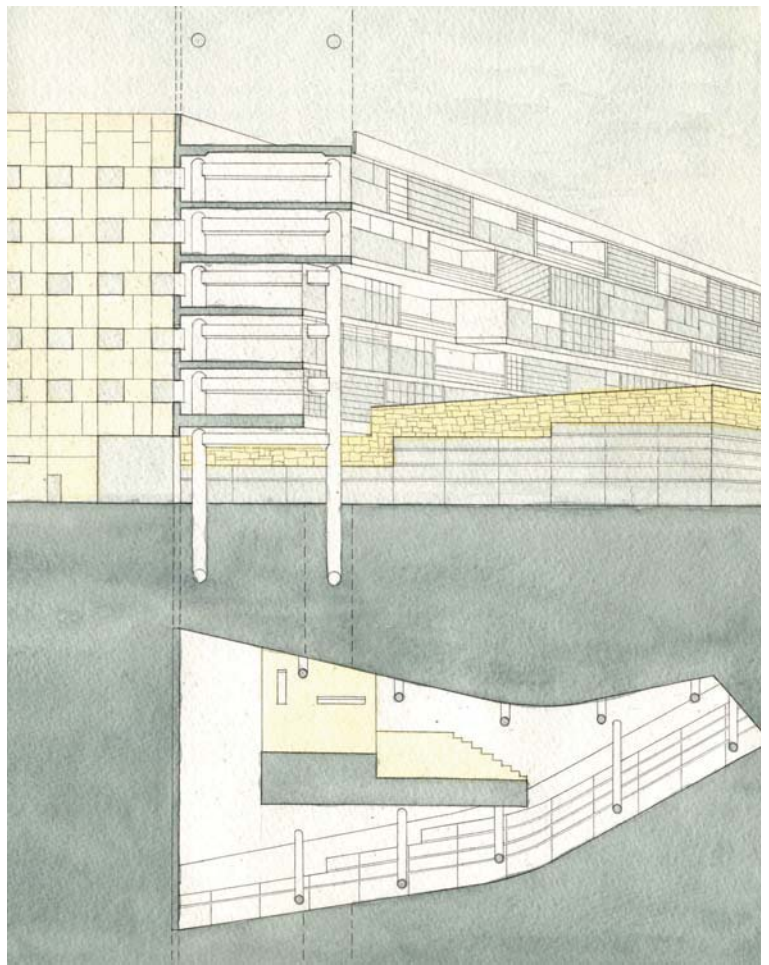
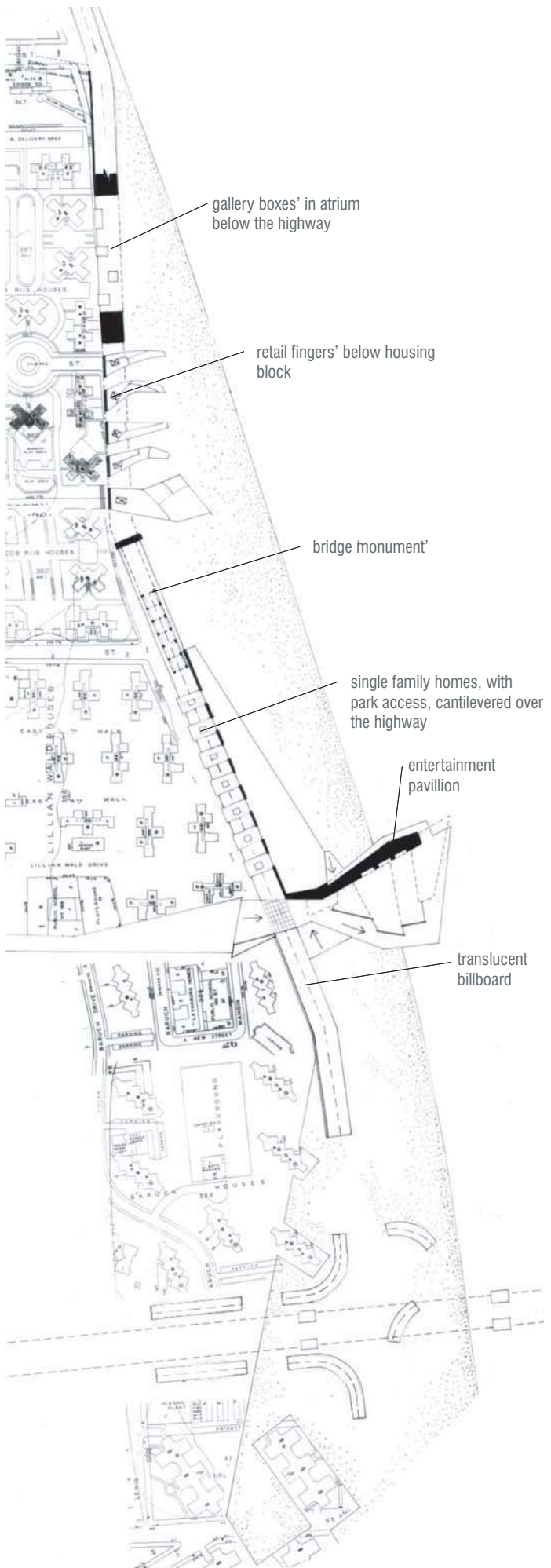
# East River Park



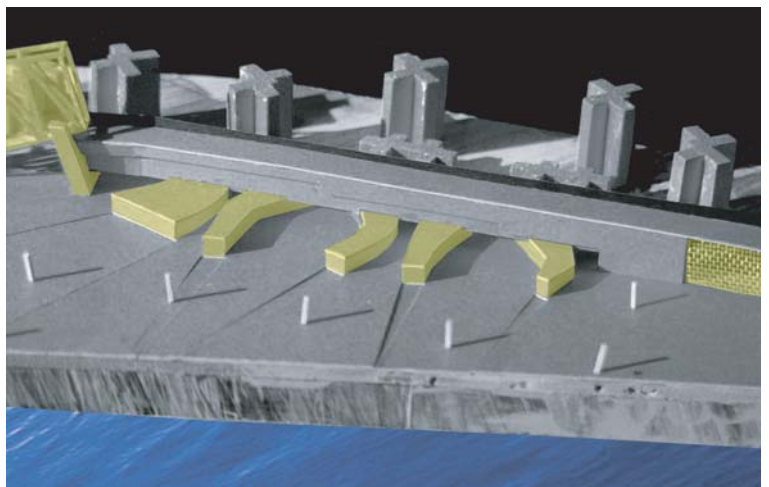
The competition brief asked for design proposals related in any way to the rejuvenation of the East River waterfront in New York City. The chosen site addresses the problem of the construction of the FDR drive, which separates East River Park from the rest of Manhattan. Recent highway construction has led to the creation of edge conditions that inadvertently created boundaries between one portion of the city and another. One way of dealing with these highways has been to bury them in order to reconnect parts of the city, a solution that denies the presence of the highway rather than embracing it and incorporating it into the urban landscape in a meaningful way. This project proposes that the edge condition created by the FDR drive be manipulated to create a meaningful threshold between one portion of the city and another, to be activated by the application of a variety of urban functions.

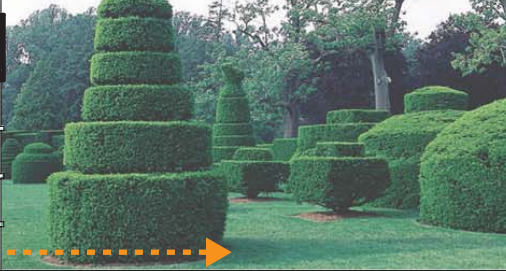


Throughout the length of the highway adjacent to East River Park, the elevation of the highway has been modified to create various conditions of enhanced boundary, occupation, and transition.

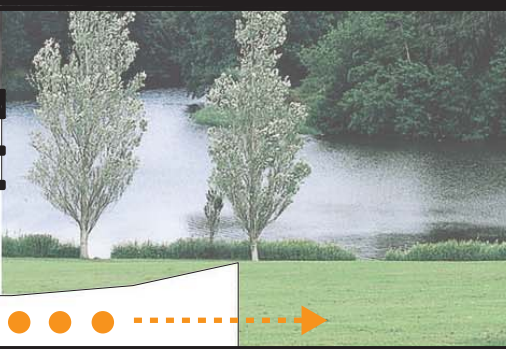


Retail fingers' extend into the park

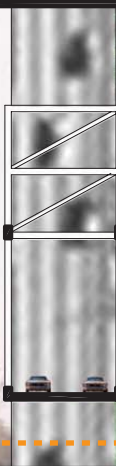




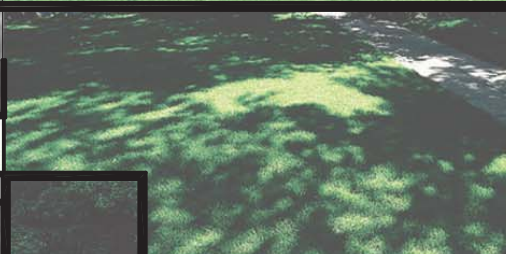
The space below the highway is utilized as a series of community gallery spaces. Transition below the highway is possible with the encounter of culture.



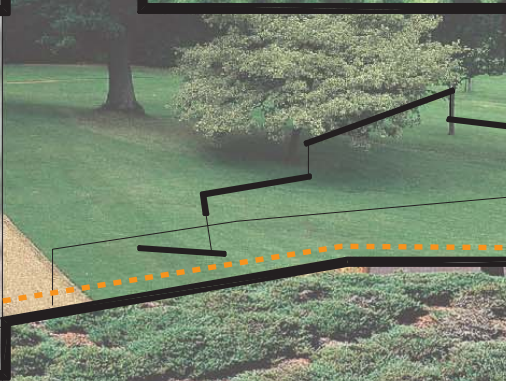
Below the highway sits a multifamily housing facility. Below the housing are a series of commercial rental spaces in the form of fingers poking through the boundary and extending out to the river. Transition is accommodated through commerce.



The transition across the highway is celebrated by a monumental bridge, acting as a gateway to the park.



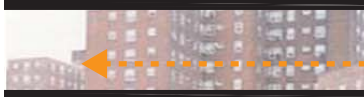
Single family homes are cantilevered above the highway. They have river views across a private garden terrace. Transition across the highway is not possible here.



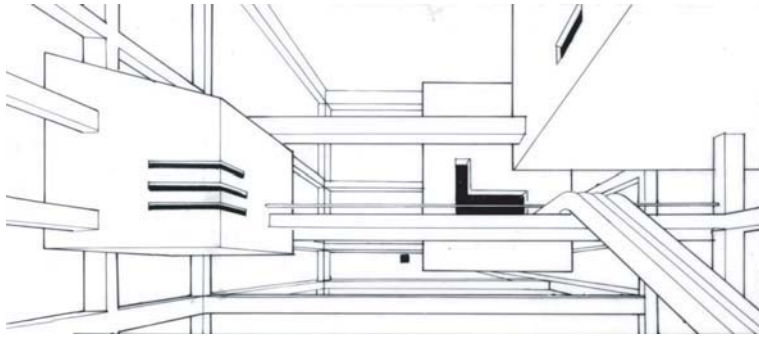
A bridge over the highway extends into a large public events hall, stretching out into the river.



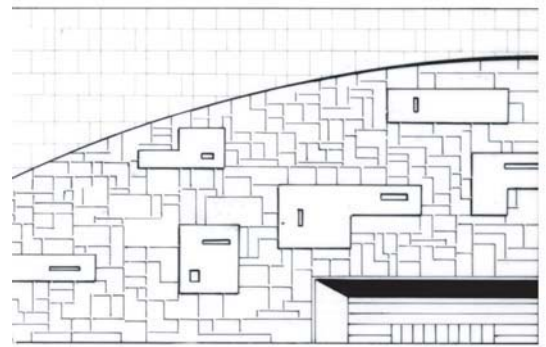
A translucent billboard separates the highway from the pedestrian.



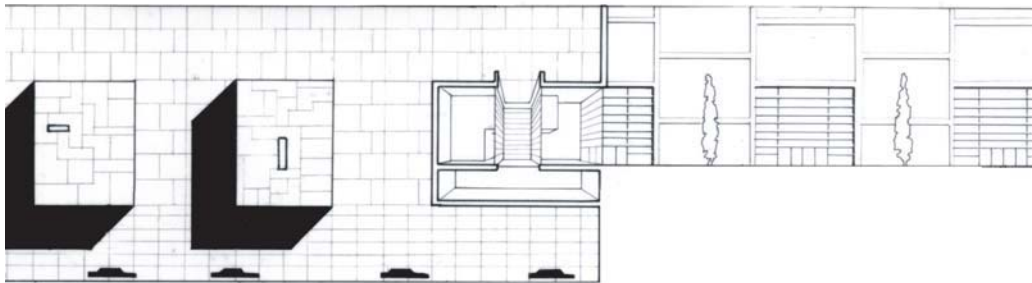
The highway is hidden below grade.



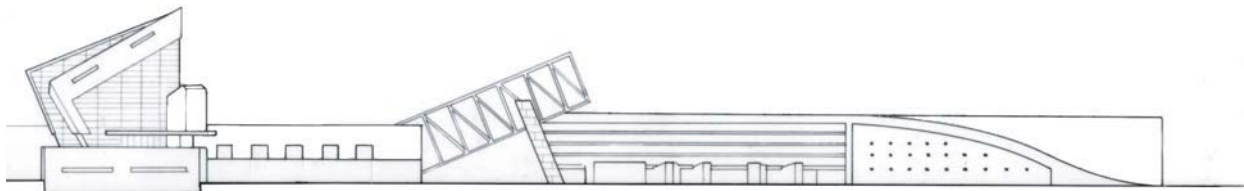
galleries below the highway



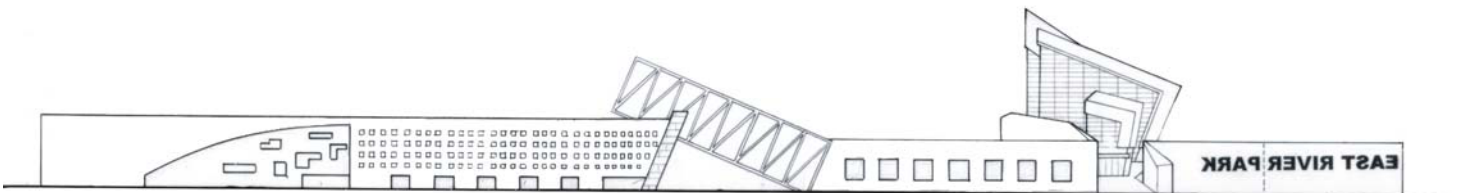
elevation of galleries



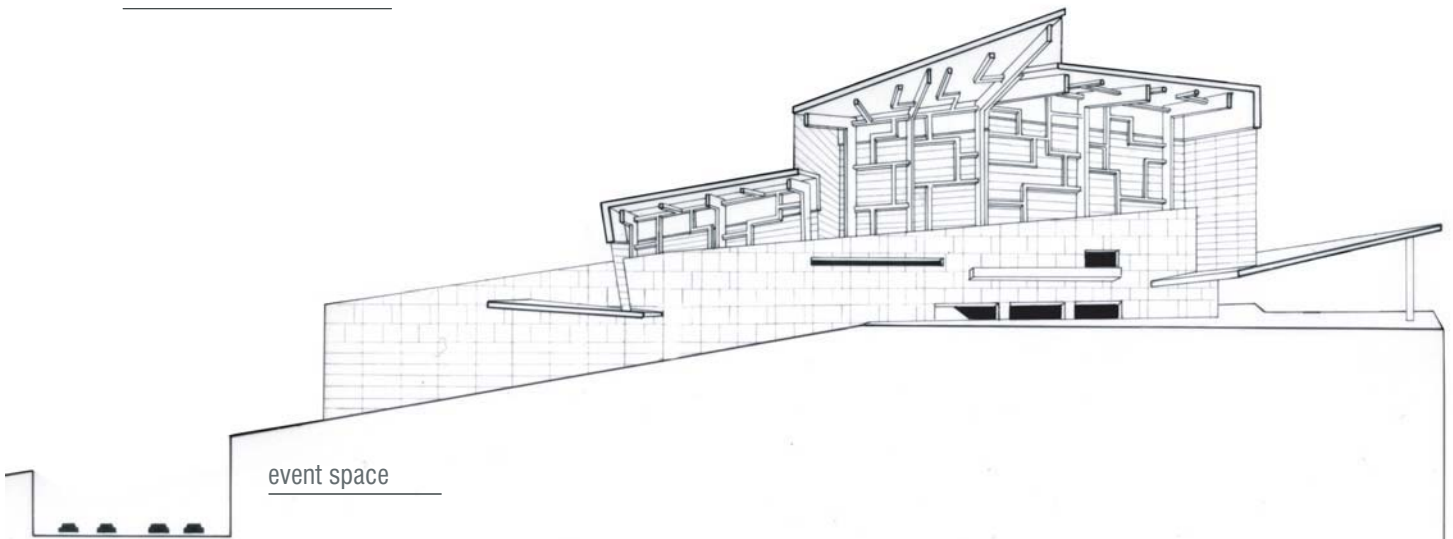
residences cantilevered above the highway



parkside elevation



streetside elevation



event space