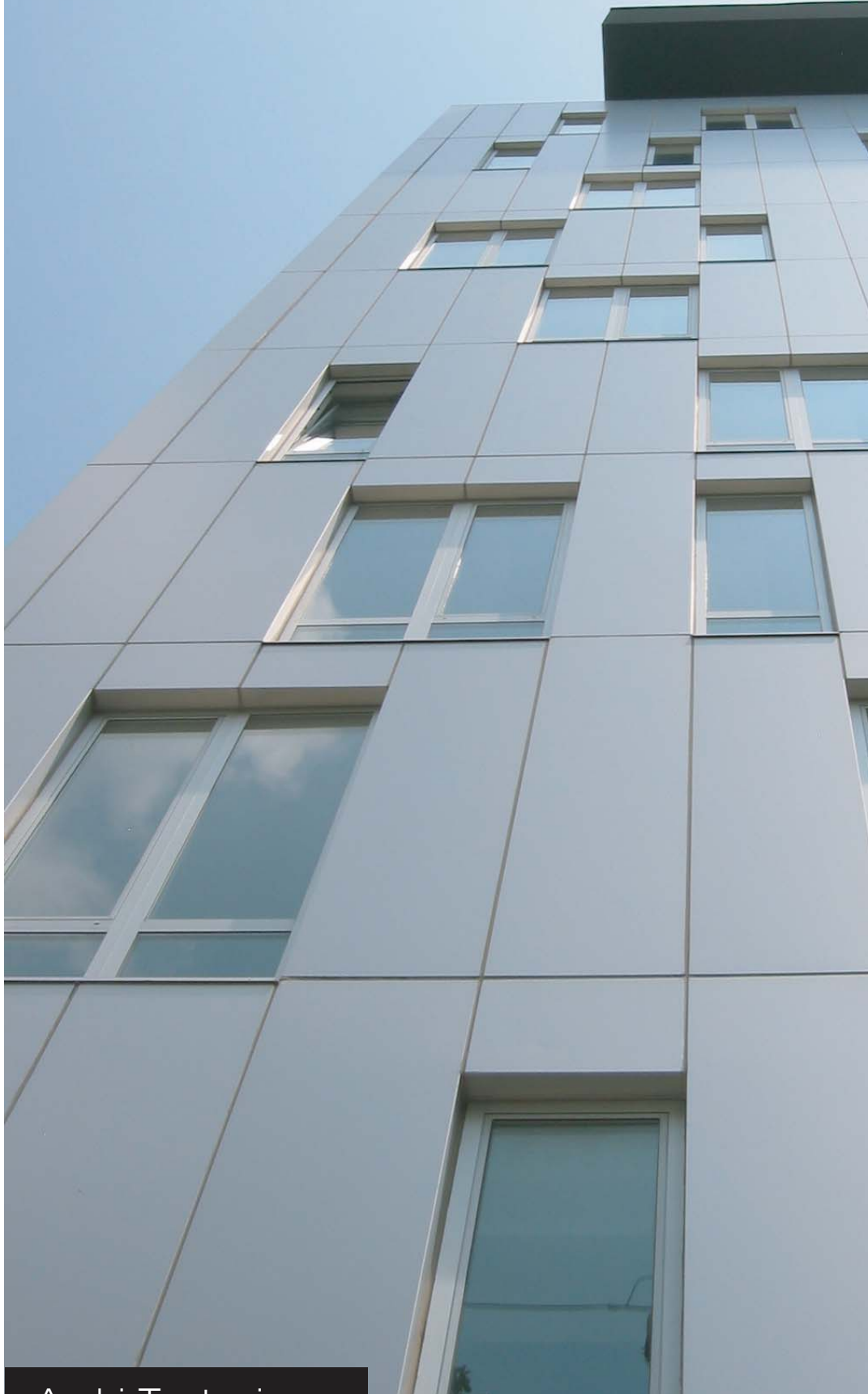


American Loft Building



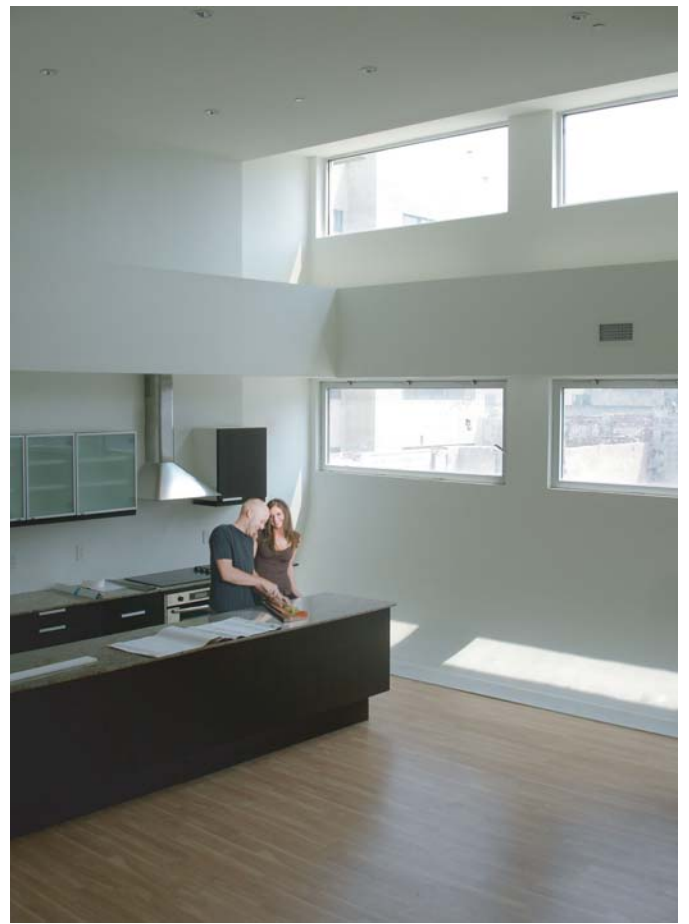
The 14 story American Loft Building sits in the up-and-coming Northern Liberties neighborhood in Philadelphia. The building provides a mix of one, two, and three bedroom apartments, including two duplex apartments at the lowest level.

The building's massing is an interlocking of two distinct volumes, one clad in aluminum and one in black stucco. The intersections of the volumes create the points where the building splits, creating access to the balconies and terraces.

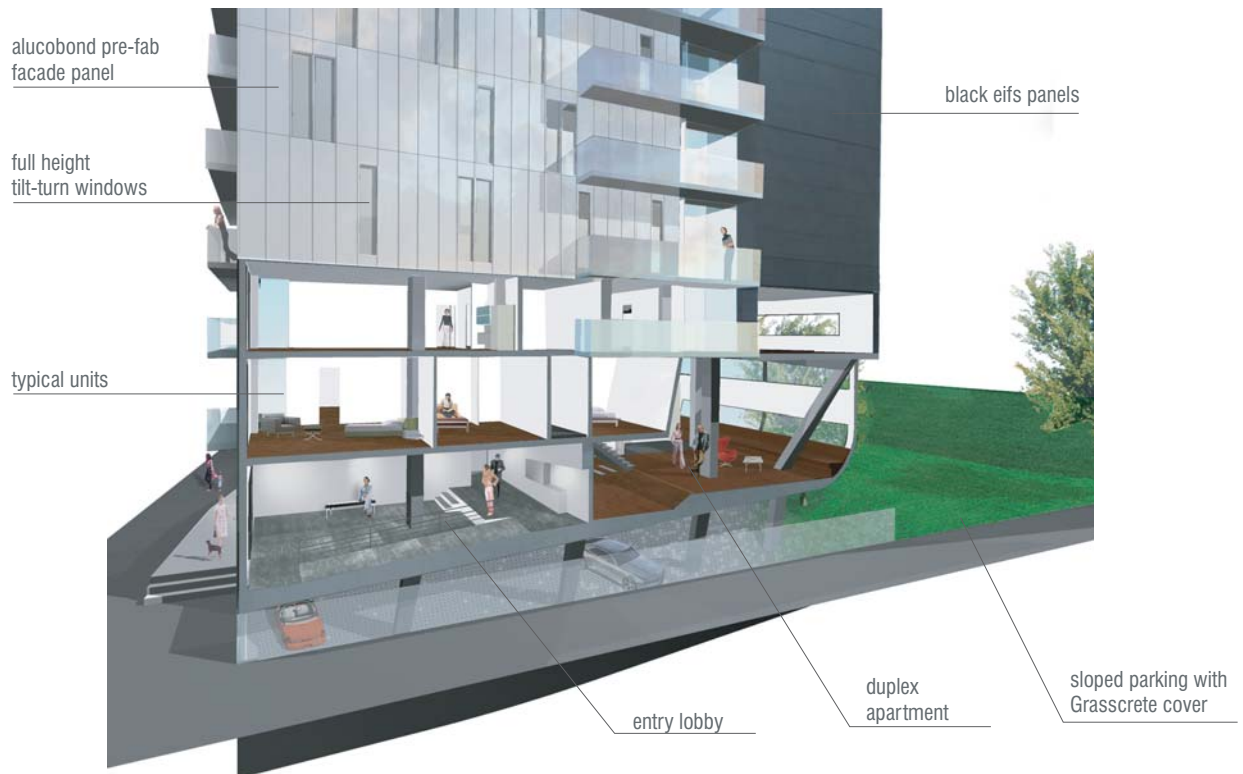
Construction is of cast-in-place concrete. The facade is created from pre-fabricated panels, with either alucobond or eifs pre-attached to an insulated stud wall backup that is hung from the slab edges.



Access to the building's below grade parking is provided by continuing the surface of the outdoor parking lot as a sloped surface that slips below the building. The building is anchored to the sidewalk at the north side, and slopes up parallel to the parking slope. The parking surface is covered in grass-crete pavers, open concrete blocks that allows grass to grow between them while accommodating the loads of vehicles. The Grass-Crete fades out below the building.



Views of Duplex Apartment



Section at Building Base



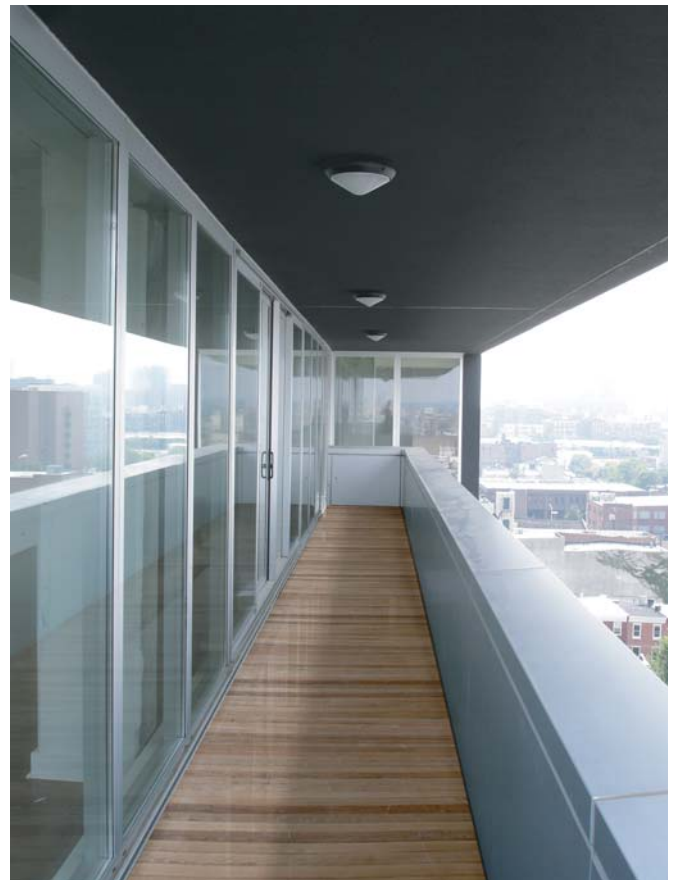
Three Bedroom Apartment



Two Bedroom Apartment



One Bedroom Apartment



Penthouse Views and Balcony